

Digi-Wave Connect is an analog audio cable converter box that sends line level audio to and from an existing Digi-Wave 400 system.

Powering On

Connect the power cable to the power port on the Digi-Wave connect.

Connecting a DLT

A USB 3.1 type C cable is included with the Digi-Wave Connect and is used to connect a DLT transceiver to the Digi-Wave Connect.

NOTE: A Standard USB 2 type C will not work. Make sure you are using the cable included with the system or another USB 3.1 type C cable.

Insert one end of the USB 3.1 type C cable into the bottom of the Digi-Wave DLT transceiver, and insert the other end into the DLT port on the Digi-Wave Connect.

No special settings are needed on the DLT transceiver for the Digi-Wave connect to work.

Once connected, the light on the top of the DLT transceiver will light up and stay lit.

The TALK button on the transceiver will function in Push-To-Latch mode, meaning the sound will be constantly broadcasting when TALK mode is activated until TALK mode is deactivated.

Connecting a DLR

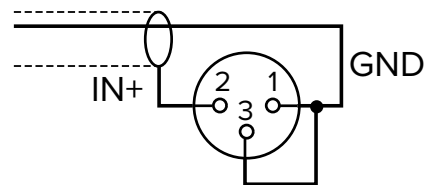
A DLR receiver will not provide the same functionality that connecting a DLT transceiver. A DLR receiver does not have a talk feature and cannot broadcast sound.

The DLR receiver can be used if only the Audio Output of a Digi-Wave system is needed. If no broadcasts to other Digi-Wave devices are needed, so that the system is only listening, this setup may be suitable.

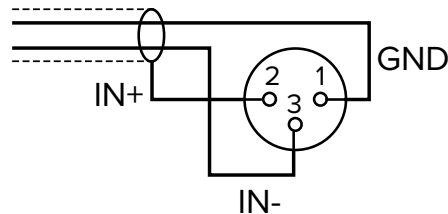
Connecting Audio Devices

Audio devices can be connected through the Line In XLR on the device. The Line In audio can be balanced or unbalanced.

UNBALANCED LINE IN AUDIO



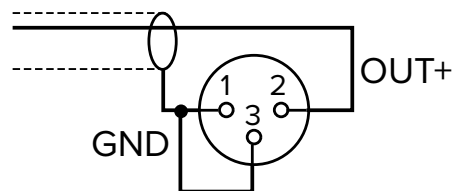
BALANCED LINE IN AUDIO



Connecting Audio Output

The audio output is connected via the Line Out XLR on the device.

AUDIO OUT



Playing Audio

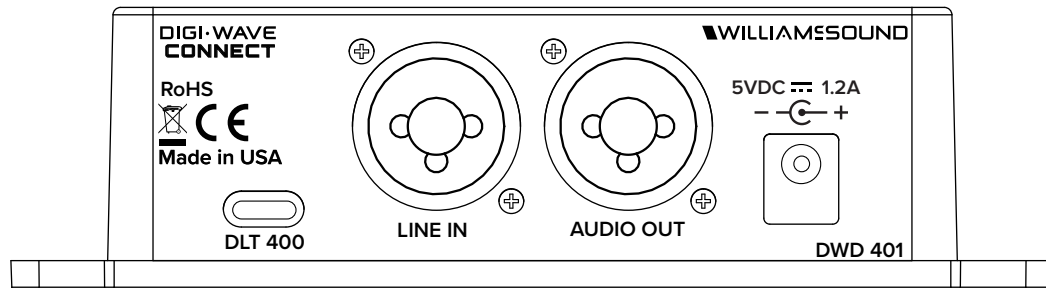
Once all of the audio device and a DLT transceiver is connected, your audio from the DLT transceiver is ready to be broadcast.

Add the DLT transceiver hard-wired to the Digi-Wave Connect to an active Digi-Wave group like you would a normal individual user. For more information on creating groups or channels, please see the full Digi-Wave manual.

The hard-wired DLT transceiver will broadcast the audio for that group or channel over the Audio Out of the Digi-Wave Connect. It will also broadcast any audio from the Audio In source over the Digi-Wave channel or group.

For Additional Information

The Digi-Wave Connect is a supplement to a Digi-Wave system. For more information on setting up and configuring a Digi-Wave system, please see the full user manual on the Williams AV website.



Digi-Wave Connect Ports and Connections

WILLIAMS AV

info@williamsav.com / www.williamsav.com
800-843-3544 / INTL: +1-952-943-2252